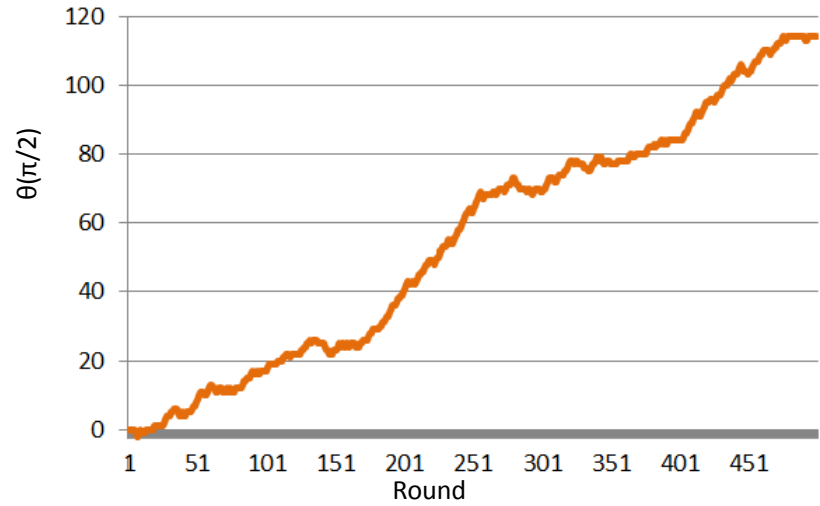
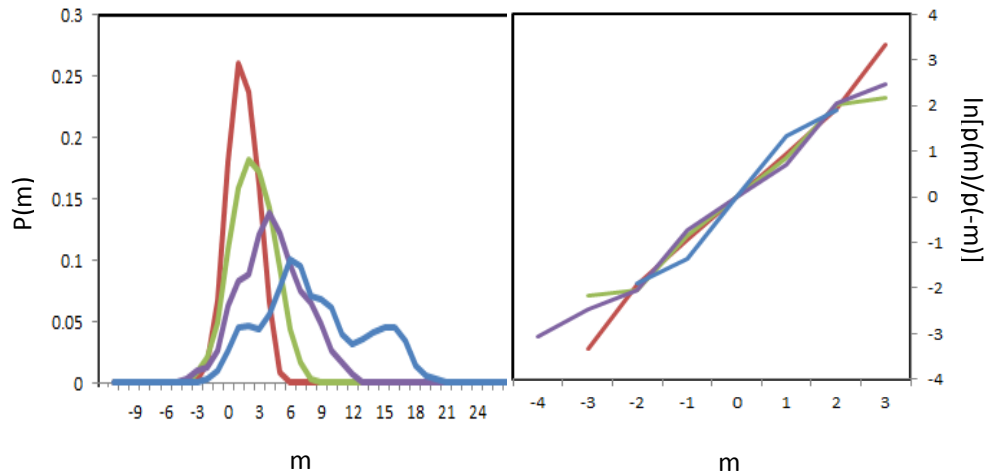


	L	R
U	40	76
D	91	23
	60	24
	9	77

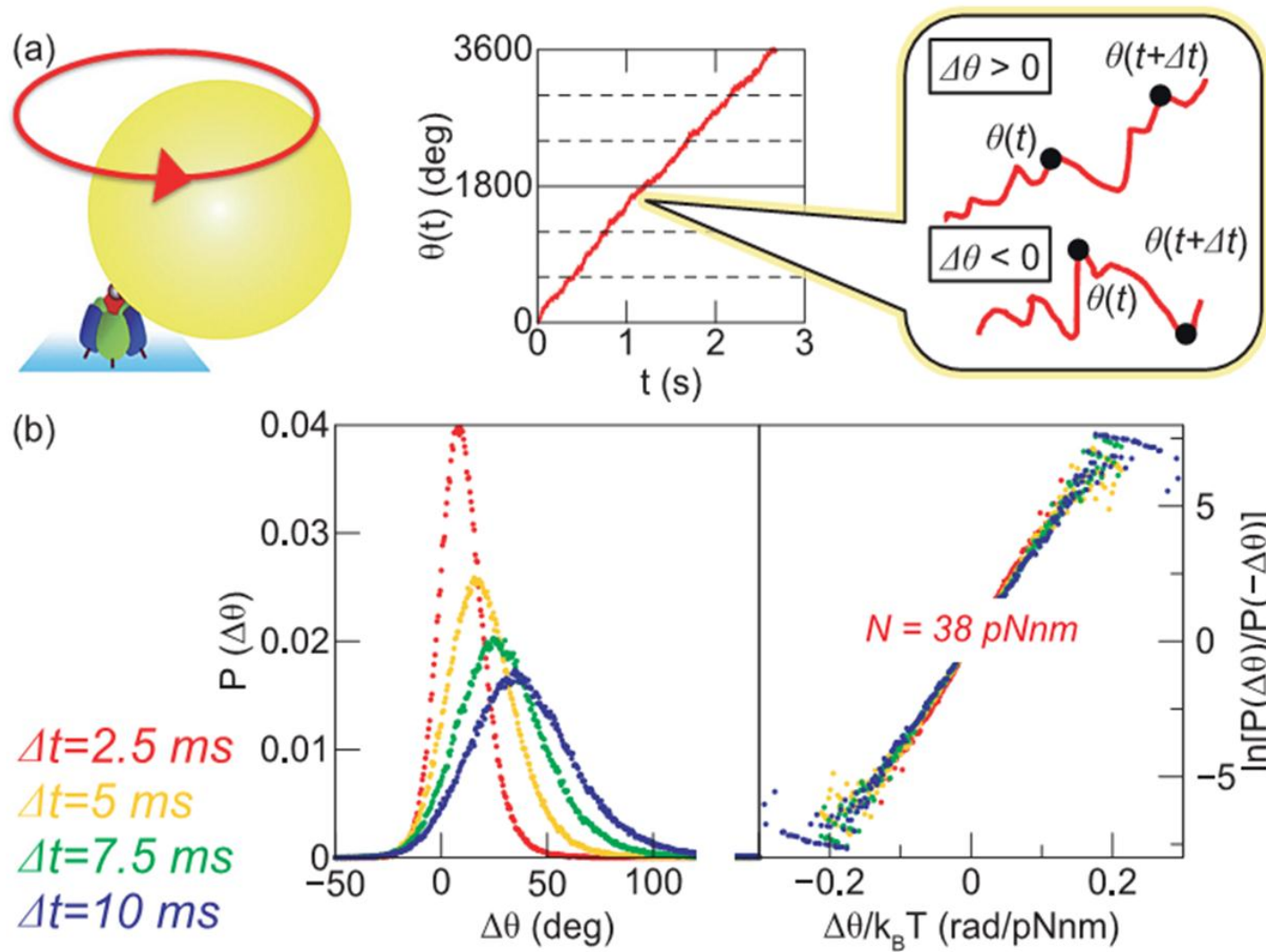


- M=4*
- M=8*
- M=16*
- M=32*



**Data:** Group 1, Game 39 in Learning and equilibrium as useful approximations: Accuracy of prediction on randomly selected constant sum games  
 Ido Erev, Alvin E. Roth, Robert L. Slonim and Greg Barron, Economic Theory, Vol. 33, No. 1 (October 2007), pp. 29-51.

**Method:** Xu, Bin and Wang, Zhijian, Social Transition Spectrum in Constant Sum 2x2 Games with Human Subjects (August 15, 2011).  
 Available at SSRN: <http://ssrn.com/abstract=1910045>



**Data:** Fluctuation Theorem Applied to F1-ATPase

Kumiko Hayashi, Hiroshi Ueno, Ryota Iino, and Hiroyuki Noji, Phys. Rev. Lett. 104, 218103 (2010).

**Method:** 林 久美子; “Fluctuation Theorem による生体モーターの駆動力測定”, 生物物理, Vol. 51, 188-189 (2011).

Available at: [http://www.istage.ist.go.jp/article/biophys/51/4/51\\_188/article-char/ja](http://www.istage.ist.go.jp/article/biophys/51/4/51_188/article-char/ja)